

OEM relative and absolute pressure transmitter type 511

Pressure range
-1 ... 0 – 600 bar



Type 511 pressure transmitters meet the highest specifications for longevity, accuracy, temperature stability and EMC characteristics, making them suitable for an extremely wide range of demanding industrial applications.

- Compact, rugged construction for highest operational reliability
- No media egress when exceeding rupture pressure
- Negligible temperature influence on accuracy
- Excellent EMC capacity
- Saving time by quick cable mounting by the customer with swift connector

Technical overview

Pressure range

Relative	-1 ... 0 – 600 bar
Absolute	0 ... 25 bar

Operating conditions

Medium		Liquids and gases
Temperature		FPM
		EPDM
		NBR
		FPM spec.
	Ambient ¹⁾	ration. output, AMP JPT all other versions
Tolerable overload / Rupture pressure ²⁾	< 6	3.0 x fs
	≥ 6	2.5 x fs (max. 900 bar)

Materials

Case		Stainless steel 1.4305 / AISI 303
Materials in contact with the medium	Pressure connection	Stainless steel 1.4305 / AISI 303
	Sensor	Ceramic Al ₂ O ₃ (96%)
	Media stop system	PPS
	Sealing material	FPM, EPDM, NBR, FPM spec.

Media stop system

Huba-patented media stop system to prevent media egress when exceeding rupture pressure range (> 40 bar nominal value).

Electrical overview

	Output	Power supply	Load	Current consumption ⁴⁾
2 wire	4 ... 20 mA	8.0 ... 33 VDC	< $\frac{\text{supply voltage} - 8\text{V}}{0.02\text{A}}$ [Ohm]	< 20 mA
	0 ... 5 V	8.0 ... 33 VDC	>10 kOhm / < 100 nF	< 4 mA
	1 ... 6 V	8.0 ... 33 VDC	>10 kOhm / < 100 nF	< 4 mA
3 wire	0 ... 10 V	11.4 ... 33 VDC	>10 kOhm / < 100 nF	< 4 mA
	0 ... 10 V	24 VAC ±15%	>10 kOhm / < 100 nF	< 4 mA
	ration. 10 ... 90%	5 VDC ±5%	>10 kOhm / < 100 nF	< 4 mA
Polarity reversal protection	Short circuit proof and protected against polarity reversal. Each connection is protected against crossover up to max. supply voltage.			
Insulation voltage			standard	500 VDC
			optional	1000 VDC

Dynamic response

Response time	< 2 ms, typ. 1 ms
Load cycle	< 100 Hz

Protection standard

With connector DIN EN 175301-803-C	IP 65
All other versions	IP 67

Electrical connection

Cable 1.5 m
Swift connector
Connector AMP (Junior power time)
Connector M12x1 plastic thread
Connector M12x1 metal thread
Connector DIN EN 175301-803-C (mini-DIN)

Pressure connection

Inside thread	G ¼ with O-Ring seal
	G ¼, sealed at back, DIN 3852, form E
Outside thread	G ½, sealed at front
	G ½, sealed at back and manometer (combi)
	¼ -18 NPT
	R ¼, DIN 2999
	M12x1.5, sealed at back, DIN 3852, form E
	M14x1.5, sealed at back, DIN 3852, form E

Installation arrangement

Unrestricted

Tests / Admissions

Electromagnetic compatibility	CE conformity acc. EN 61326-2-3
UL	acc. Standard 61010-1
Shock acc. IEC 60068-2-27	100 g, 11 ms half sine wave, all 6 directions. Free fall from 2 m on concrete (6x)
Constant shock acc. IEC 60068-2-29	40 g for 6 ms, 1000x all 3 directions
Vibration acc. IEC 60068-2-6	20 g, 2 ... 2000 Hz with amplitude ± 15 mm, 1 Octave/min. all 3 directions, 50 constant load

Weight

Version with inside thread	~ 85 g
Version with outside thread	~ 95 g

Packaging (Please state on order)

Single packaging in cardboard	accessories integrated
Multiple packaging in cardboard (25 pcs)	accessories integrated

¹⁾ Version until +150 °C on request

²⁾ higher overload and rupture pressure on request

³⁾ at nominal pressure

Accuracy

Parameter		Unit	
Tolerance zero point	max.	% fs	±0.3
Tolerance full scale	max.	% fs	±0.3
Resolution		% fs	0.1
Total of linearity, hysteresis and repeatability	max.	% fs	±0.3
Long term stability acc. DIN EN 60770		% fs	±1.0
TC zero point ¹⁾	max.	% fs/10K	±0.15
TC sensitivity ¹⁾	max.	% fs/10K	±0.15

Test conditions: 25 °C, 45% RH, power supply 24 VDC
TC z.p. / TC s. -40 ... +125 °C

Order code selection table in bar

				511.	X	X	X	X	X	X	X	X	X	X	
Pressure mode	Relative			9											
	Absolute			8											
Pressure range ²⁾	-1 ... 0 bar			9	0	0									
	0 ... 1 bar				1	1									
	0 ... 1.6 bar				1	2									
	0 ... 2.5 bar				1	4									
	0 ... 4 bar				1	5									
	0 ... 6 bar				1	7									
	0 ... 10 bar				3	0									
	0 ... 16 bar				3	1									
	0 ... 25 bar				3	2									
	0 ... 40 bar				9	3	3							2	
	0 ... 60 bar				9	4	0							2	
	0 ... 100 bar				9	4	1							2,5	
	0 ... 160 bar				9	4	2							2,5	
	0 ... 250 bar				9	4	3							2,5	
	0 ... 400 bar (FPM spec. seal only)				9	5	4	6						2,5	
0 ... 600 bar (FPM spec. seal only)				9	5	5	6						2,5		
▲ Full scale signal at these pressures															
Sealing material ²⁾	FPM	Fluoro elastomer					0								
	EPDM	Ethylene propylene					1								
	NBR	Butadiene Acrylonitrile					2								
	FPM spec.	Fluoro elastomer spec.					6								
Adjustment	Factory							0							
Output / power supply	0 ... 5 V	8.0 ... 33 VDC	IN=1 / OUT=3 / GND=4							1					
	1 ... 6 V	8.0 ... 33 VDC	IN=1 / OUT=3 / GND=4							6					
	0 ... 10 V	11.4 ... 33 VDC	IN=1 / OUT=3 / GND=4							2					
	0 ... 5 V	8.0 ... 33 VDC	IN=1 / OUT=4 / GND=3							F	5,7				
	1 ... 6 V	8.0 ... 33 VDC	IN=1 / OUT=4 / GND=3							G	5,7				
	0 ... 10 V	11.4 ... 33 VDC	IN=1 / OUT=4 / GND=3							H	5,7				
	0 ... 10 V	24 VAC ±15%								7	1,0				
	4 ... 20 mA	8.0 ... 33 VDC								3					
	ration. 10 ... 90%	5 VDC ±5%								4					
	Electrical connection	Cable 1.5 m													0
Swift connector														1	
Connector AMP JPT ⁴⁾														2	
Connector M12x1 plastic thread ⁴⁾														5	
Connector M12x1 metal thread ⁴⁾														7	
Connector DIN EN 175301-803-C (mini DIN) 2 w: IN=3 / OUT=1 3 w: IN=3 / OUT=2 / GND=1															8
Connector DIN EN 175301-803-C (mini DIN) 2 w: IN=1 / OUT=2 3 w: IN=1 / OUT=3 / GND=2															9
Pressure connection ⁵⁾	Inside thread	G ¼ mit O-Ring seal (no pressure tip orifice possible)												1	
	Outside thread	G ¼ sealed at back, DIN 3852, form E												4	
	Outside thread	G ½ sealed at front												9	
	Outside thread	G ½ sealed at back and manometer (combi)												8	
	Outside thread	¼ -18 NPT												3	
	Outside thread	R ¼, DIN 2999												7	
	Outside thread	M12x1.5, sealed at back, DIN 3852, form E												5	
Outside thread	M14x1.5, sealed at back, DIN 3852, form E												6		
Version	Stainless steel without media stopper (≤ 60 bar)													1	
	Stainless steel with media stopper (standard ≥ 40 bar)													2	
	Stainless steel with pressure tip orifice (≥ 100 bar)													5	
Pressure range variation (optional)	Indicate W and state range on order (e.g.: W0... + 8bar/OUT1...6V)												W		

Accessories

	Order number
Female connector for connector M12x1	106975
Female connector AMP (Junior power timer) 2-wire	110442
Female connector AMP (Junior power timer) 3-wire	108767
Female connector swift connector (included in delivery)	107359
Female connector mini DIN	104244
Calibration certificate	104551

¹⁾ TC = Temperature coefficient

²⁾ Other pressure range on request

³⁾ Other sealing material on request

⁴⁾ Delivery without female connector

⁵⁾ Other pressure connection on request

Order code selection table in psi		511. X X X X X X X X X X X													
Pressure mode	Relative	9													
	Absolute	8													
Pressure range ¹⁾	-30 ... 0" hg	9	A	0											
	0 ... 15 psi		B	1											
	0 ... 30 psi		B	4											
	0 ... 60 psi		B	5											
	0 ... 100 psi		B	7											
	0 ... 200 psi		C	1											
	0 ... 300 psi		C	2											
	0 ... 500 psi	9	C	3									2		
	0 ... 750 psi	9	D	0									2		
	0 ... 1000 psi	9	D	1									2,5		
	0 ... 2000 psi	9	D	2									2,5		
	0 ... 3000 psi	9	D	3									2,5		
	0 ... 5000 psi (FPM spec. seal only)	9	E	4	6								2,5		
	0 ... 7500 psi (FPM spec. seal only)	9	E	5	6								2,5		
▲ Full scale signal at these pressures															
Sealing material ²⁾	FPM Fluoro elastomer											0			
	EPDM Ethylene propylene											1			
	NBR Butadiene Acrylonitrile											2			
	FPM spec. Fluoro elastomer spec.											6			
Adjustment	Factory											0			
Output / power supply	0 ... 5 V 8.0 ... 33 VDC IN=1 / OUT=3 / GND=4												1		
	1 ... 6 V 8.0 ... 33 VDC IN=1 / OUT=3 / GND=4												6		
	0 ... 10 V 11.4 ... 33 VDC IN=1 / OUT=3 / GND=4												2		
	0 ... 5 V 8.0 ... 33 VDC IN=1 / OUT=4 / GND=3												F	5,7	
	1 ... 6 V 8.0 ... 33 VDC IN=1 / OUT=4 / GND=3												G	5,7	
	0 ... 10 V 11.4 ... 33 VDC IN=1 / OUT=4 / GND=3												H	5,7	
	0 ... 10 V 24 VAC ±15%												7	1,0	
	4 ... 20 mA 8.0 ... 33 VDC												3		
	ratiom. 10 ... 90% 5 VDC ±5%												4		
	Electrical connection	Cable 1.5 m												0	
Swift connector													1		
Connector AMP JPT ⁴⁾													2		
Connector M12x1 plastic thread ⁴⁾													5		
Connector M12x1 metal thread ⁴⁾													7		
Connector DIN EN 175301-803-C (mini DIN) 2 w: IN=3 / OUT=1 3 w: IN=3 / OUT=2 / GND=1														8	
Connector DIN EN 175301-803-C (mini DIN) 2 w: IN=1 / OUT=2 3 w: IN=1 / OUT=3 / GND=2														9	
Pressure connection ⁵⁾	Inside thread G ¼ mit O-Ring seal (no pressure tip orifice possible)												1	1,2	
	Outside thread G ¼ sealed at back, DIN 3852, form E												4		
	Outside thread G ½ sealed at front												9		
	Outside thread G ½ sealed at back and manometer (combi)												8		
	Outside thread ¼ -18 NPT												3		
	Outside thread R ¼, DIN 2999												7		
	Outside thread M12x1.5, sealed at back, DIN 3852, form E												5		
	Outside thread M14x1.5, sealed at back, DIN 3852, form E												6		
Version	Stainless steel without media stopper (< 700 psi)													1	
	Stainless steel with media stopper (standard > 500 psi)													2	
	Stainless steel with pressure tip orifice (> 1000 psi)													5	
Pressure range variation (optional)	Indicate W and state range on order (e.g.: W0... + 120psi/OUT1...6V)													W	

¹⁾ Other pressure range on request

²⁾ Other sealing material on request

³⁾ Delivery without female connector

⁴⁾ Other pressure connection on request

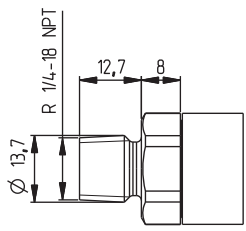
Order code selection table in MPa			511. X X X X X X X X X X X																			
Pressure mode	Relative		9																			
	Absolute		8																			
Pressure range ¹⁾	-0.1 ... 0 MPa		9	F	0																	
	0 ... 0.1 MPa			G	1																	
	0 ... 0.16 MPa			G	2																	
	0 ... 0.25 MPa			G	4																	
	0 ... 0.4 MPa			G	5																	
	0 ... 0.6 MPa			G	7																	
	0 ... 1 MPa			H	0																	
	0 ... 1.6 MPa			H	1																	
	0 ... 2.5 MPa			H	2																	
	0 ... 4 MPa		9	H	3															2		
	0 ... 6 MPa		9	K	0															2		
	0 ... 10 MPa		9	K	1															2,5		
	0 ... 16 MPa		9	K	2															2,5		
	0 ... 25 MPa		9	K	3															2,5		
	0 ... 40 MPa (FPM spec. seal only)		9	L	4	6														2,5		
0 ... 60 MPa (FPM spec. seal only)		9	L	5	6														2,5			
▲ Full scale signal at these pressures																						
Sealing material ²⁾	FPM	Fluoro elastomer																		0		
	EPDM	Ethylene propylene																		1		
	NBR	Butadiene Acrylonitrile																		2		
	FPM spec.	Fluoro elastomer spec.																		6		
Adjustment	Factory																			0		
Output / power supply	0 ... 5 V	8.0 ... 33 VDC	IN=1 / OUT=3 / GND=4																	1		
	1 ... 6 V	8.0 ... 33 VDC	IN=1 / OUT=3 / GND=4																	6		
	0 ... 10 V	11.4 ... 33 VDC	IN=1 / OUT=3 / GND=4																	2		
	0 ... 5 V	8.0 ... 33 VDC	IN=1 / OUT=4 / GND=3																	F 5,7		
	1 ... 6 V	8.0 ... 33 VDC	IN=1 / OUT=4 / GND=3																	G 5,7		
	0 ... 10 V	11.4 ... 33 VDC	IN=1 / OUT=4 / GND=3																	H 5,7		
	0 ... 10 V	24 VAC ±15%																		7 1,0		
	4 ... 20 mA	8.0 ... 33 VDC																		3		
	ration. 10 ... 90%	5 VDC ±5%																		4		
	Electrical connection	Cable 1.5 m																			0	
Swift connector																			1			
Connector AMP JPT ⁴⁾																			2			
Connector M12x1 plastic thread ⁴⁾																			5			
Connector M12x1 metal thread ⁴⁾																			7			
Connector DIN EN 175301-803-C (mini DIN) 2 w: IN=3 / OUT=1 3 w: IN=3 / OUT=2 / GND=1																				8		
Connector DIN EN 175301-803-C (mini DIN) 2 w: IN=1 / OUT=2 3 w: IN=1 / OUT=3 / GND=2																				9		
Pressure connection ⁵⁾	Inside thread	G ¼ mit O-Ring seal (no pressure tip orifice possible)																		1	1,2	
	Outside thread	G ¼ sealed at back, DIN 3852, form E																		4		
	Outside thread	G ½ sealed at front																		9		
	Outside thread	G ½ sealed at back and manometer (combi)																		8		
	Outside thread	¼ -18 NPT																		3		
	Outside thread	R ¼, DIN 2999																		7		
	Outside thread	M12x1.5, sealed at back, DIN 3852, form E																		5		
	Outside thread	M14x1.5, sealed at back, DIN 3852, form E																		6		
Version	Stainless steel without media stopper (< 6 MPa)																				1	
	Stainless steel with media stopper (standard ≥ 4 MPa)																				2	
	Stainless steel with pressure tip orifice (≥ 10 MPa)																				5	
Pressure range variation (optional)	Indicate W and state range on order (e.g.: W0... + 0.8MPa/OUT1...6V)																					W

¹⁾ Other pressure range on request

²⁾ Other sealing material on request

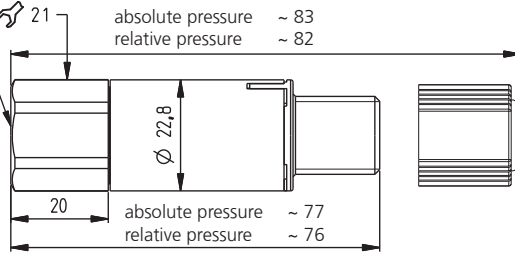
³⁾ Delivery without female connector

⁴⁾ Other pressure connection on request

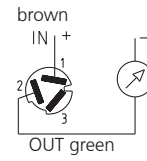


G 1/4
Inside thread

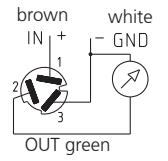
Female connector
swift connector



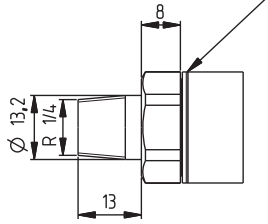
2 wire
(4 ... 20 mA)



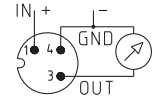
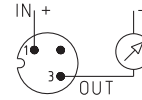
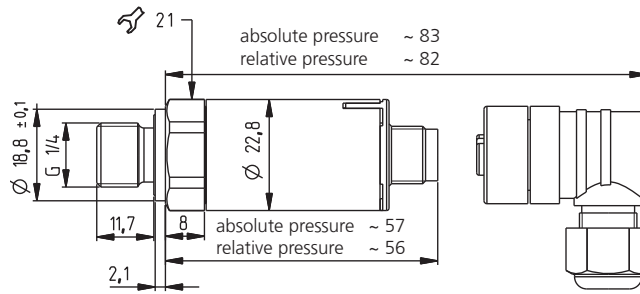
3 wire



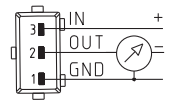
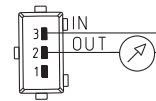
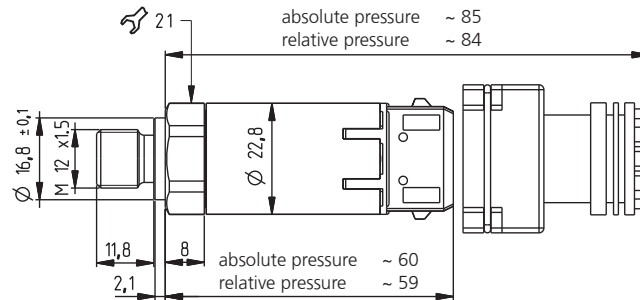
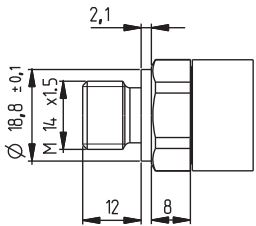
All absolute versions
are especially marked
with an indentation.



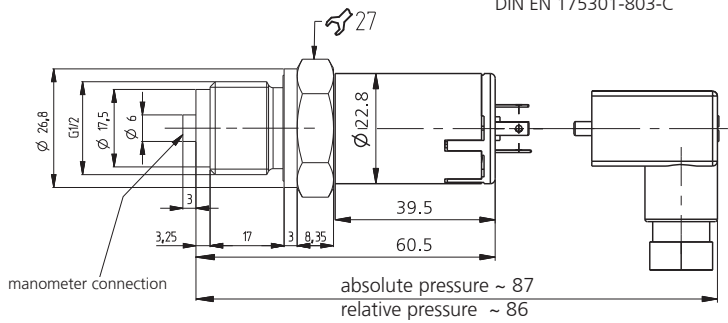
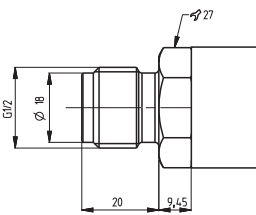
Female connector M12x1



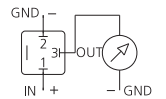
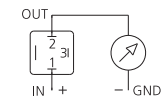
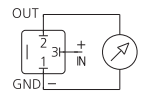
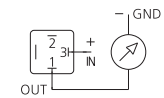
Female connector AMP JPT



Female connector
DIN EN 175301-803-C



manometer connection



Huba Control AG
Headquarters

Industriestrasse 17
5436 Würenlos
Telefon +41 (0) 56 436 82 00
Telefax +41 (0) 56 436 82 82
info.ch@hubacontrol.com

Huba Control AG
Niederlassung Deutschland

Schlattgrabenstrasse 24
72141 Walddorfhäslach
Telefon +49 (0) 7127 23 93 00
Telefax +49 (0) 7127 23 93 20
info.de@hubacontrol.com

Huba Control SA
Succursale France

Rue Lavoisier
Technopôle Forbach-Sud
57602 Forbach Cedex
Téléphone +33 (0) 387 847 300
Télécopieur +33 (0) 387 847 301
info.fr@hubacontrol.com

Huba Control AG
Vestiging Nederland

Hamseweg 20A
3828 AD Hoogland
Telefoon +31 (0) 33 433 03 66
Telefax +31 (0) 33 433 03 77
info.nl@hubacontrol.com

Huba Control AG
Branch Office United Kingdom

Unit 13 Berkshire House
County Park Business Centre
Shrivenham Road
Swindon Wiltshire SN1 2NR
Phone +44 (0) 1993 776667
Fax +44 (0) 1993 776671
info.uk@hubacontrol.com