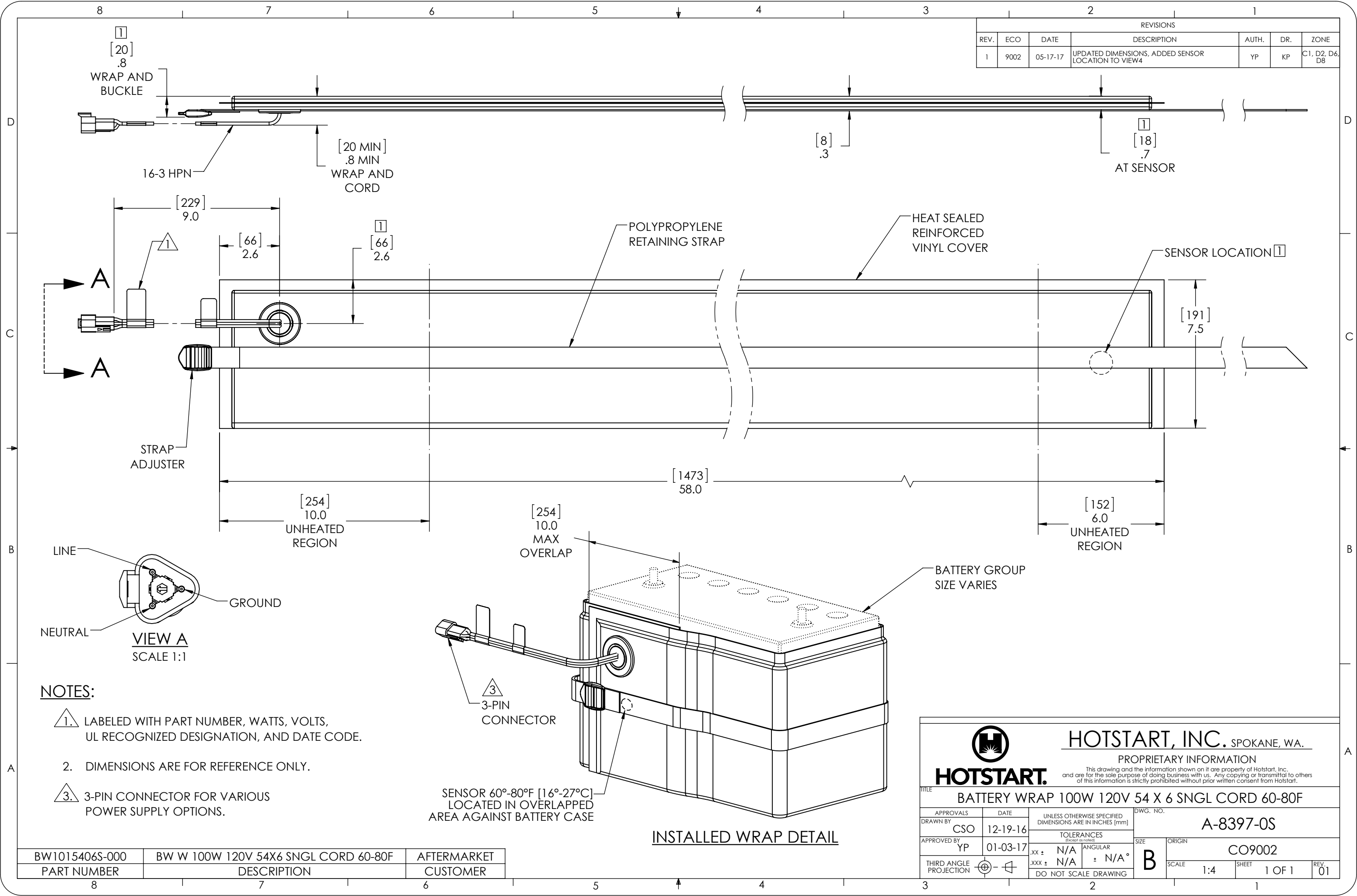


REVISIONS						
REV.	ECO	DATE	DESCRIPTION	AUTH.	DR.	ZONE
1	9002	05-17-17	UPDATED DIMENSIONS, ADDED SENSOR LOCATION TO VIEW4	YP	KP	C1, D2, D6, D8



- NOTES:**
- 1. LABELED WITH PART NUMBER, WATTS, VOLTS, UL RECOGNIZED DESIGNATION, AND DATE CODE.
 - 2. DIMENSIONS ARE FOR REFERENCE ONLY.
 - 3. 3-PIN CONNECTOR FOR VARIOUS POWER SUPPLY OPTIONS.

SENSOR 60°-80°F [16°-27°C]
LOCATED IN OVERLAPPED
AREA AGAINST BATTERY CASE

INSTALLED WRAP DETAIL

		HOTSTART, INC. SPOKANE, WA. PROPRIETARY INFORMATION <small>This drawing and the information shown on it are property of Hotstart, Inc. and are for the sole purpose of doing business with us. Any copying or transmittal to others of this information is strictly prohibited without prior written consent from Hotstart.</small>	
BATTERY WRAP 100W 120V 54 X 6 SNGL CORD 60-80F			
APPROVALS	DATE	UNLESS OTHERWISE SPECIFIED DIMENSIONS ARE IN INCHES [mm]	DWG. NO.
DRAWN BY CSO	12-19-16	TOLERANCES (Except as noted)	A-8397-0S
APPROVED BY YP	01-03-17	SIZE	ORIGIN CO9002
THIRD ANGLE PROJECTION	DO NOT SCALE DRAWING	SCALE 1:4	SHEET 1 OF 1

BW1015406S-000	BW W 100W 120V 54X6 SNGL CORD 60-80F	AFTERMARKET
PART NUMBER	DESCRIPTION	CUSTOMER