

FALCON MJ Pulse/M-Bus module

Data flexibility and quality for remote reading applications

- Communication module for ELSTER M100i and M120i meters
- M-Bus acc. to EN13757, OMS compliant
- Pulse output (acc. ISO22158) configurable via M-Bus



Module specification	
Type	Combined Pulse and M-Bus module
Protection class	IP 68
Cable	LiYY 5 x 0.14
Battery	3.6V lithium
Power supply	By M-Bus; battery supply in pulse mode or if M-Bus fails
M-Bus load	1 Load
Battery lifetime	15 years typical (at 25°C ambient temperature)
Sensing	Inductive with 3 coils, non-reactive
Colour	Grey
Operating temperature	-15°C to +65°C
Storage temperature	-20°C to 70°C
Standard pulse setting	1 litre per pulse; 100 ms pulse length
M-Bus	
Protocol	M-Bus according EN13757 OMS compatible
Supported baud rates	300, 2400, 9600 baud (auto bauding)
Secondary address	Last 8 digits of the serial number
Primary address	Configurable
Manufacturer ID	ELR
Wire colours M-Bus	Green / Yellow; reverse polarity protection
Pulse	
Pulse rates	1...1000 litres per pulse; configurable
Pulse width	10...500 ms; configurable
Output load	30V DC, max. 30mA
Pulse line	Compensated pulses
Alarm line	Wirecut
Wire colours Pulse	White (+) and Brown (-); Red (Wirecut)

FALCON MJ Pulse/M-Bus module Technical Data

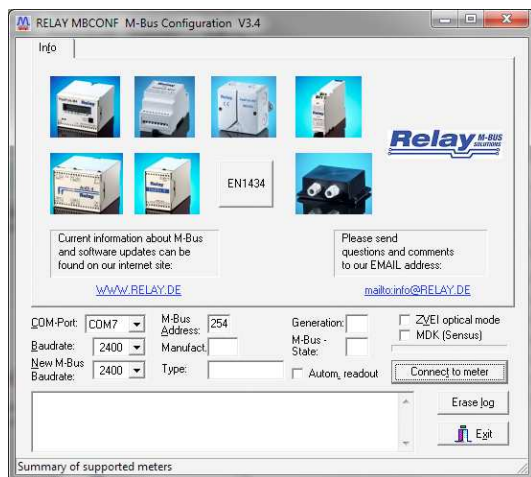
M-Bus data records short telegram:

- Current meter index
- Current date and time
- Total backflow volume
- Yearly due date value (default, 01.01. of each year)
- Current flow rate
- Max. flow rate value of the month with Datestamp
- Backflow alarm date
- Manipulation alarm date (Removal and magnetic fraud)



Module configuration

The configuration of the M-Bus parameters and the pulse output settings is possible with the software tool M-BCONF*. A M-Bus connection with the module is required.



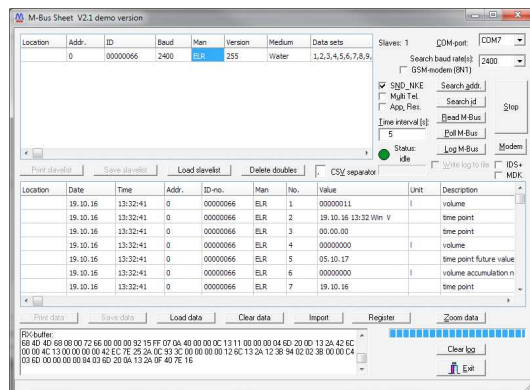
M-Bus data records long telegram:

- Same as short telegram
- 13 last monthly index values
- 13 last monthly max. flow rate values with date

The read out is possible with a standard M-Bus software.

We recommend the tool MBSheet from Relay*.

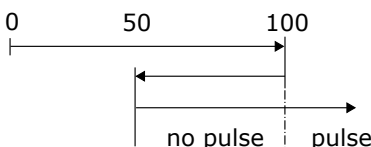
* Relay GmbH, www.relay.de/en, demo version free of charge



Configurable pulse values

The pulse rate can be configured as an integer value from 1 - 1000 litres/pulse. The pulse length can be set between 10 - 500 ms. The factory setting of the pulse output is 1 litre/pulse, 100ms pulse length. The pulse output setting is fixed to "compensated pulses".

During a backward flow no pulses are sent to the output. After renewed forward flow first the pulse numbers which are stored in the memory are deleted. This makes sure that the pulses are in line with the original meter index.



Dimensions

H	Brushing height	mm	25
L	Cable length	m	3