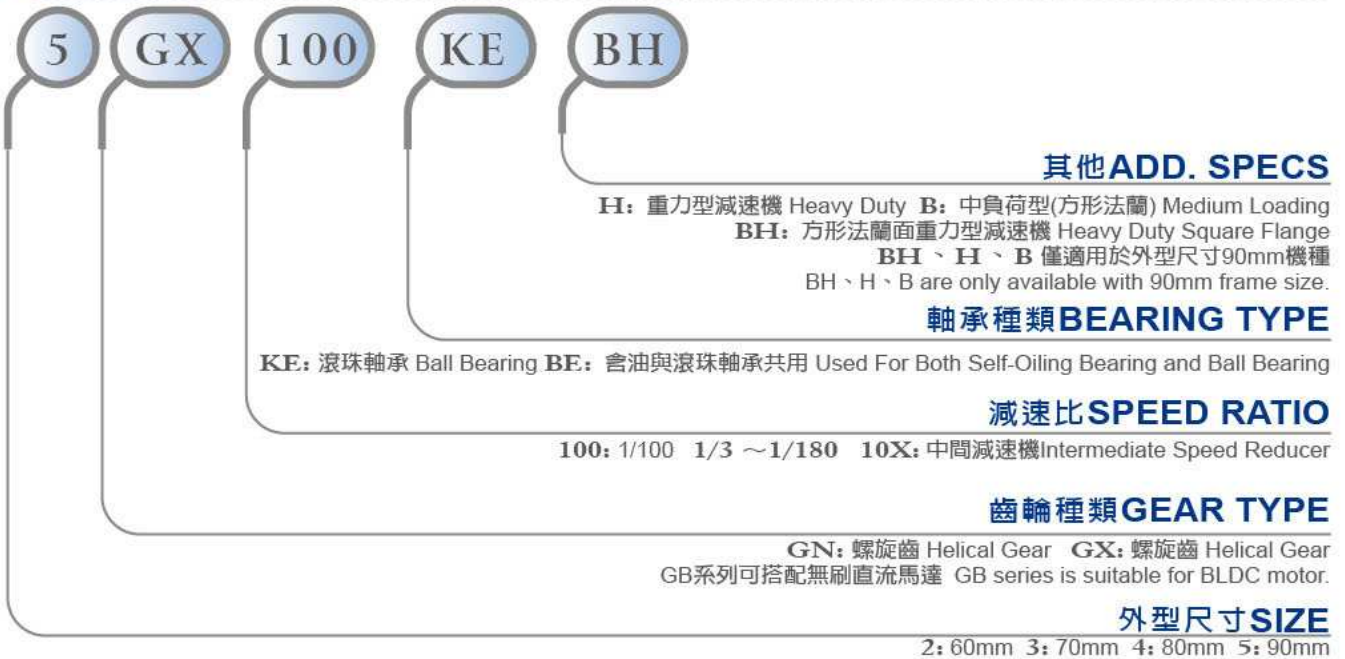


# 品名之定義

## PRODUCT NAME CODING SYSTEM

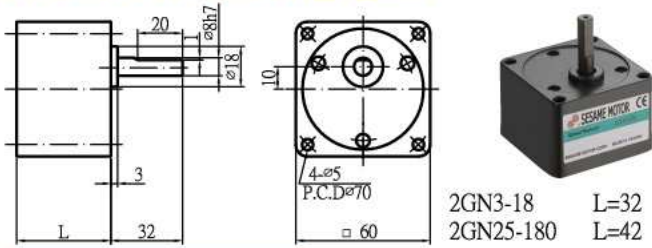
### ● 減速機 SPEED REDUCER



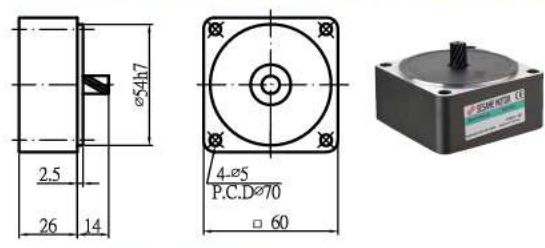


- 外形圖與規格表
- OUTLINE & SPECIFICATION
- 單位/UNIT : mm

### ■ 2 GN □ KE . 2 GN □ 減速機 / SPEED REDUCER

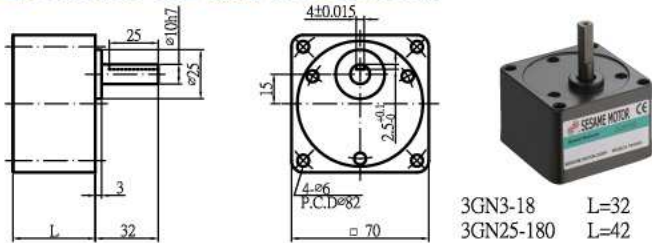


### ■ 2GN10X . 2GN10XK 中間減速機 / INTERMEDIATE SPEED REDUCER

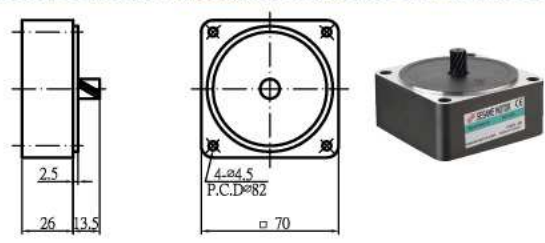


迴轉速 / SPEED(rpm)	500	300	200	180	150	120	100	60	50	30	20	15	10
減速比 / SPEED REDUCTION RATIO 50HZ	3	5	7.5	-	10	12.5	15	25	30	50	75	100	150
減速比 / SPEED REDUCTION RATIO 60HZ	3.6	6	9	10	-	15	18	30	36	60	90	120	180
最大容許轉矩 / (kgf.cm) MAX. TORQUE	1.1	1.8	2.7	3.0	3.9	4.5	5.4	8.1	9.7	15	23	25	25

### ■ 3 GN □ KE . 3 GN □ 減速機 / SPEED REDUCER

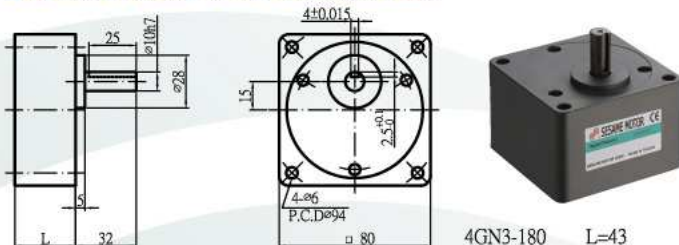


### ■ 3GN10X . 3GN10XK 中間減速機 / INTERMEDIATE SPEED REDUCER

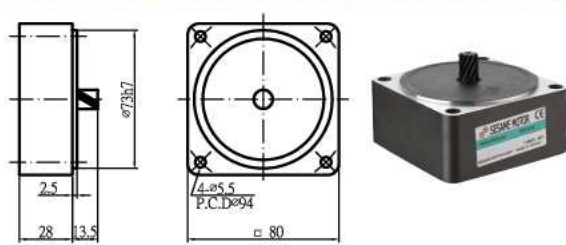


迴轉速 / SPEED(rpm)	500	300	200	180	150	120	100	60	50	45	37.5	30	20	15	10
減速比 / SPEED REDUCTION RATIO 50HZ	3	5	7.5	-	10	12.5	15	25	30	-	40	50	75	100	150
減速比 / SPEED REDUCTION RATIO 60HZ	3.6	6	9	10	-	15	18	30	36	40	-	60	90	120	180
最大容許轉矩 / (kgf.cm) MAX. TORQUE	2.6	4.4	6.6	7.4	9.8	11	13	20	24	24	32	36	50	50	50

### ■ 4 GN □ KE . 4 GN □ 減速機 / SPEED REDUCER

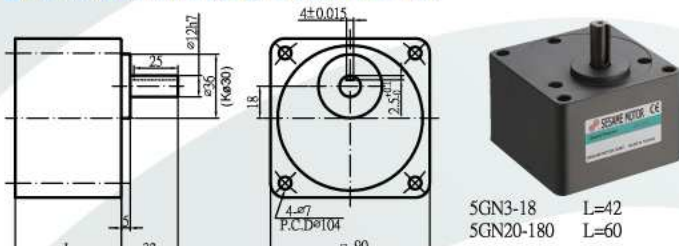


### ■ 4GN10X . 4GN10XK 中間減速機 / INTERMEDIATE SPEED REDUCER

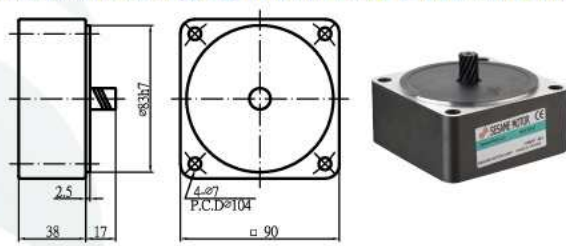


迴轉速 / SPEED(rpm)	500	300	200	180	150	120	100	60	50	45	37.5	30	20	15	10
減速比 / SPEED REDUCTION RATIO 50HZ	3	5	7.5	-	10	12.5	15	25	30	-	40	50	75	100	150
減速比 / SPEED REDUCTION RATIO 60HZ	3.6	6	9	10	-	15	18	30	36	40	-	60	90	120	180
最大容許轉矩 / (kgf.cm) MAX. TORQUE	4.4	7.4	11	12	15	11	22	33	40	40	50	60	80	80	80

### ■ 5 GN □ KE . 5 GN □ 減速機 / SPEED REDUCER



### ■ 5GN10X . 5GN10XK 中間減速機 / INTERMEDIATE SPEED REDUCER



迴轉速 / SPEED(rpm)	500	300	200	180	150	120	100	90	75	60	50	45	37.5	30	20	15	10
減速比 / SPEED REDUCTION RATIO 50HZ	3	5	7.5	-	10	12.5	15	-	20	25	30	-	40	50	75	100	150
減速比 / SPEED REDUCTION RATIO 60HZ	3.6	6	9	10	-	15	18	20	-	30	36	40	-	60	90	120	180
最大容許轉矩 / (kgf.cm) MAX. TORQUE	10	17	26	29	36	43	52	52	65	78	93	93	100	100	100	100	100

GENERAL PURPOSE MOTOR  
SPEED CONTROLLED MOTOR  
速度控制型馬達

CONTROLLER  
控制器

BRAKE MOTOR  
剎車馬達

CLUTCH BRAKE MOTOR  
離合剎車馬達

TORQUE MOTOR  
轉矩馬達

SPEED REDUCER  
減速機

COMPONENTS  
零組件類

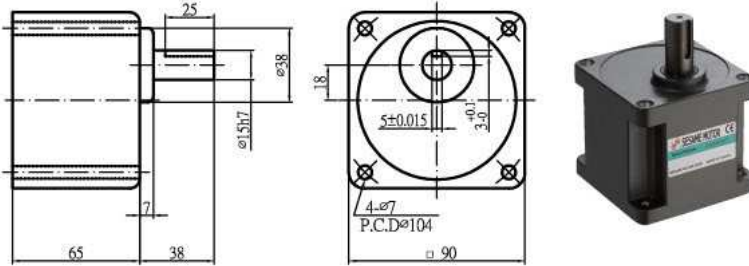
UNGEAR ACTUATOR  
推桿馬達



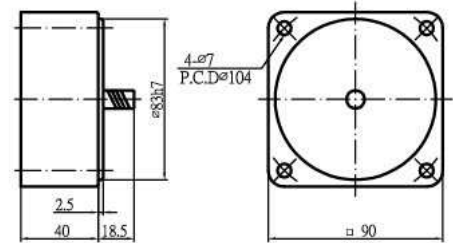


# 減速機 SPEED REDUCER

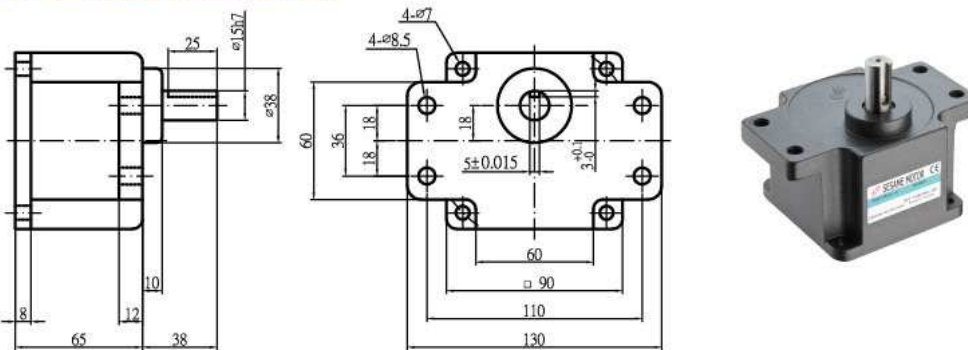
## ■ 5 GX□KB 減速機/ SPEED REDUCER



## ■ 5GX10XK 中間減速機/ INTERMEDIATE SPEED REDUCER

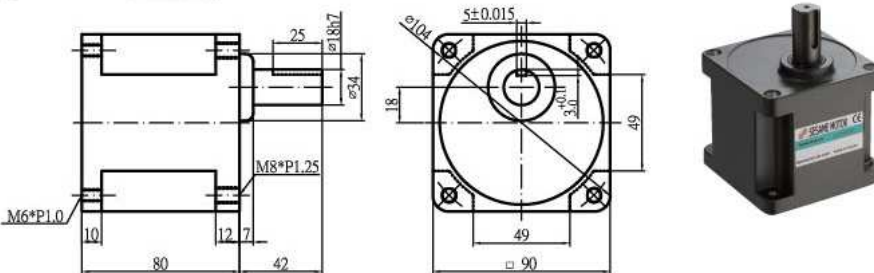


## ■ 5 GX□K 減速機/ SPEED REDUCER



迴轉速/ SPEED(rpm)	500	300	200	120	100	90	75	60	50	30	20	15	10	9	7.5
減速比/ SPEED REDUCTION RATIO 50HZ	3	5	7.5	12.5	15	-	20	25	30	50	75	100	150	-	200
減速比/ SPEED REDUCTION RATIO 60HZ	3.6	6	9	15	18	20	-	30	36	60	90	120	180	200	-
最大容許轉矩/ (kgf.cm) MAX. TORQUE	15	26	38	57	69	69	86	103	124	200	200	200	200	200	200

## ■ 5 GX□KBH 重力減速機/ GRAVITY FORCE TYPE REDUCER



迴轉速/ SPEED(rpm)	30	20	15	10	9	7.5
減速比/ SPEED REDUCTION RATIO 50HZ	50	75	150	150	-	200
減速比/ SPEED REDUCTION RATIO 60HZ	60	90	180	120	200	-
最大容許轉矩/ (kgf.cm) MAX. TORQUE	350	350	350	350	350	350

### 說明：

- 減速機品名中□放入減速比。
- 迴轉速是以馬達的同步轉速為基準(50 HZ: 1500rpm, 60HZ: 1800rpm)除以減速比; 實際迴轉速應依負載之大小減少2%~20%。
- 標示□的減速機旋轉方向與馬達方向相反, 其他則與馬達同方向。
- 齒箱使用注意事項及說明: 減速機中若有金屬或異物仍勉強與馬達組合, 將會使齒輪受傷而產生異常音, 及減少減速機使用壽命, 也可能發生意外, 請特別注意。
- 齒箱與馬達結合一定要核對編碼是否正確, 否則無法組裝。

### NOTES:

- Please fill in the required speed reduction ratio in the □ (square) after the speed reducer model no.
- Rotational speed is calculated by dividing the synchronous speed of the motor (50Hz: 1500rpm; 60Hz: 1800rpm) with the reduction ration. Depending on total load, actual rotational speed is 2%~20% less.
- Speed reducers marked in the highlighted areas have opposite rotational direction to the motor. Others unmarked have the same rotational direction as the motor.
- Notes on Gearbox Usage and Operation: if foreign objects, such as metal filings, exist on the reducer, please take special care that forced assembly with the motor will result damage to the gears and create noise, and/or decrease service-life of the reducer. Accidents may also occur during such process.
- Please make sure that the shaft size of the motor matches to that of the accompanying reducer model before assembly, otherwise inconformity will occur.