

TUP: Stem-type temperature transducer

For measuring the temperature of liquid or gaseous media in conjunction with pneumatic *centair* control systems.

Housing of light alloy; force-balance system with nozzle-ball. Measuring element: stainless-steel tubing Ø 6 mm, filled with expansion fluid; diaphragm box; lever system with spring converter. Cover of thermoplastic; compressed-air connection Rp 1/8, female thread.

Type	Measuring range °C	Length of stem		Temp. range of sensor °C	Weight kg	
		total mm	active mm			
TUP 214 F001	-20...40	304	201	-25...70	0.16	
TUP 224 F001	5...35	304	201	-25...70	0.16	
TUP 242 F001	0...120	214	112	-25...150	0.15	
TUP 262 F001	80...200	214	112	-25...210	0.15	
Supply pressure 1)				Time constant in air	0.5 m/s 3.0 m/s	3.2 min 1.6 min
via external restrictor Ø 0.2 mm		1.3 ± 0.1 bar				
Output pressure		0.2...1.0 bar		Influence of temp. at head		
Air consumption		33 l _n /h		TUP 214, TUP 224		0.07 K/K
Linearity		< 2%		TUP 242, TUP 262		0.12 K/K
Time constant in water				Permissible ambient temp.		0...70 °C
without sheath		12 s		Connection diagram		A02781
with sheath		70 s		Dimension drawing		M297632
sheath and heat-conducting paste		25 s		Fitting instructions		MV 23210

Accessories

- 0226807 300*** LW7 sheath of brass, 300 mm, for TUP 214/224 with R½ thread; max. 16 bar 2).
- 0226807 225*** LW7 sheath of brass, 225 mm, for TUP 242/262 with R½ thread; LW7 max. 16 bar 2).
- 0226811 300*** LW7 sheath of stainless-steel, 300 mm, for TUP 214/224 with G½ A; max. 25 bar 2).
- 0226811 225*** LW7 sheath of stainless-steel, 225 mm, for TUP 242/262 with G½ A; max. 25 bar 2).
- 0364263 000*** Welding bushing of steel, with G½ female thread; flat seal of copper 2).
- 0364264 000*** Welding bushing of stainless-steel, with G½ female thread; flat seal of copper and Teflon (for aggressive media) 2).
- 0297631 000*** Fixing flange of thermoplastic for direct fitting onto air duct.

*) Dimension drawing for accessory is available under the same number.

- 1) In the RCP and RPP 20 controllers, the restrictors Ø 0.2 mm are fitted at inputs 3 and 4.
See Section 60 on regulations concerning the quality of supply air, especially at low ambient temperatures.
- 2) See page 29.01 or 29.001 for further technical details.

Operation

The expansion fluid in the immersion stem expands when heated and exerts a proportional pressure on the diaphragm box. This is converted by spring converter into a force acting on the force-comparison lever. The bleed-off nozzle-ball system converts this force into a pressure change. When the pressure is rising, the output pressure also rises.

Engineering and fitting instructions

The positional effect can be negated by making the necessary adjustment of the screw in the centre of the diaphragm box. The tension of the spring converter should not be altered, because the measuring span is unaffected by either fitting or use.

Technical information

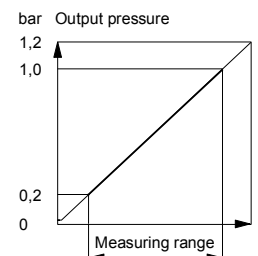
Technical manual: *centair* system 304991 003



T09295

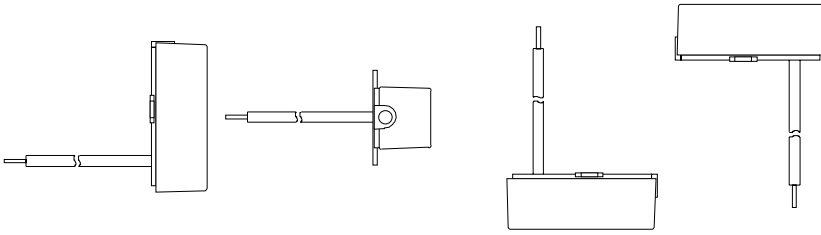


Y02818



B02784

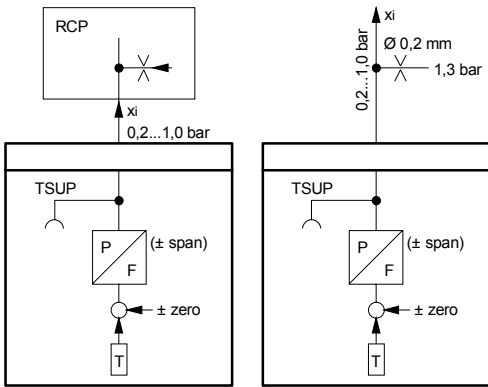
Permissible fitting positions



Lageeinfluss nachjustieren
Influence de la position de montage à ajuster
Adjust with screw

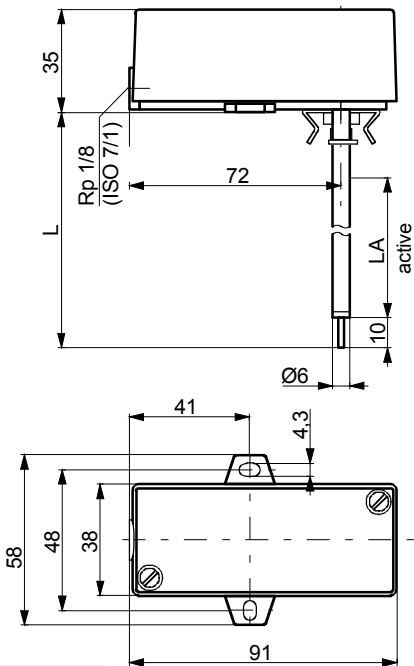
B02819

Connection diagram



A02781

Dimension drawing

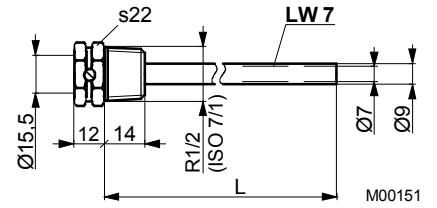


TYP	L	LA
TUP 214	304	201
TUP 224	304	201
TUP 242	214	112
TUP 262	214	112

M297632

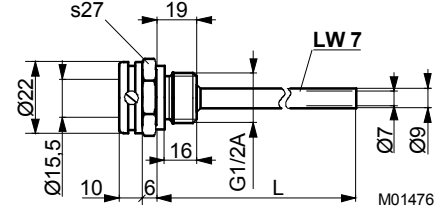
Accessories

226807/ ...
226809/ ...



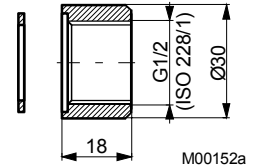
M00151

226811/ ...



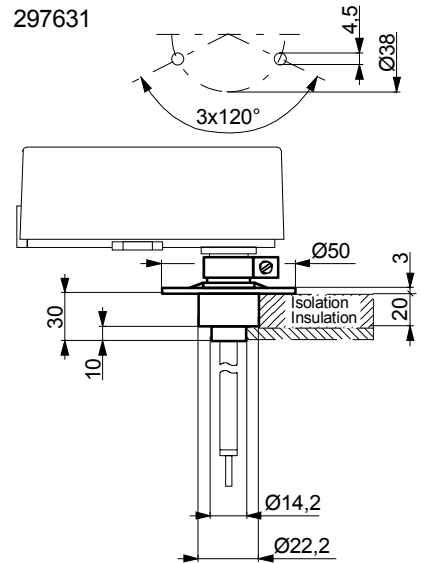
M01476

364263
364264



M00152a

297631



M00153b