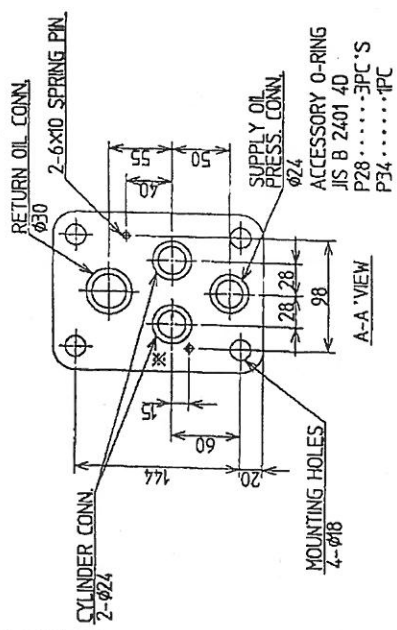
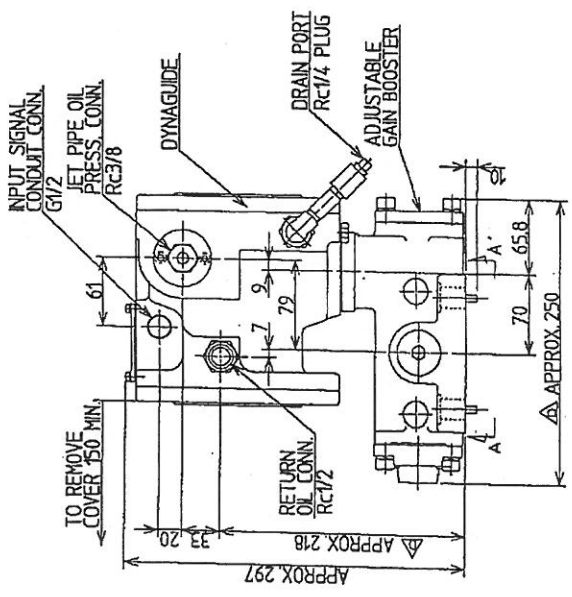
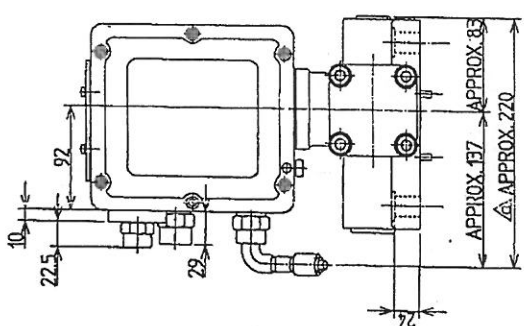
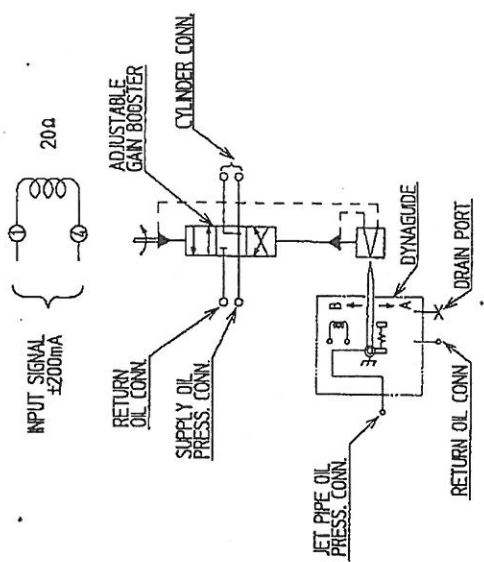


NO.	DATE	DESCRIPTION	REV.	CKD.
1	1991/02/25	V-6401 → 6500	H.OTSU	H.SANO
2	2007/03/19	REV. (B-2146)	S.HIRAKO	Y.IHAI
3				
4				
5				
6				
7				
8				

WIRING DIAGRAM



SPECIFICATIONS

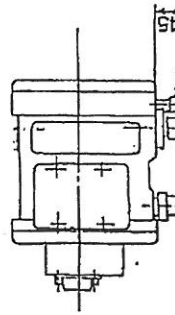
JET NOZZLE	: φ16
SUPPLY OIL PRESS.	: 15MPa
JET PIPE OIL PRESS.	: 15MPa
ALLOWABLE DRAIN PRESS.	: 0.4MPa
MOMENTARY MAX. OIL PRESS.	: 2.4MPa
GASKET MATERIAL	: VALQUA 6500Δ
O-RING MATERIAL	: VITON

WHEN INPUT SIGNAL INCREASE, OIL PRESS. COME OUT FOR \* PORT (A-A VIEW) WITH JET PIPE SWING B SIDE.

DYNAGUIDE	
DJ230-B010C/Y	
Y: NON-ASBESTOS SEAL	
OWN.	T.SUICHIYA 1991/12/02 MASS APPROX. 2.8kg
CKD.	H.SANO 1991/12/04 SCALE 1:4
APPD.	T.SAITO 1991/12/05 ORDER NO.
DRG. NO.	BA4085.0-EA



- SPECIFICATIONS**
- JET NOZZLE :  $\phi 1.6$
  - SUPPLY OIL PRESS. : 15 kgf / cm<sup>2</sup>
  - JET PIPE OIL PRESS. : 15 kgf / cm<sup>2</sup>
  - ALLOWABLE DRAIN PRESS. : 1 kgf / cm<sup>2</sup>
  - MOMENTARY MAX. OIL PRESS. : 21 kgf / cm<sup>2</sup>
  - GASKET MATERIAL : VALQUA 6500  $\Delta$
  - O RING MATERIAL : VITON



JET PIPE OIL PRESS. CONN. Rc 3/8

TO REMOVE COVER 150 MIN.

RETURN OIL CONN. Rc 1/2

INPUT SIGNAL CONDUIT CONN. 2-G1/2

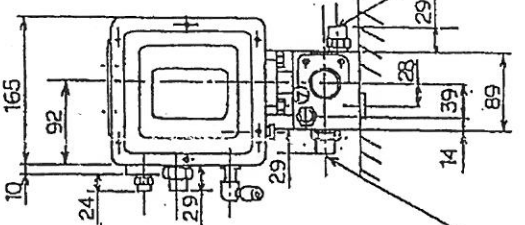
DYNAGUIDE

DRAIN PORT Rc 1/4 PLUG

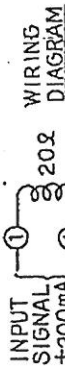
MOUNTING FACE

ADJUSTABLE GAIN BOOSTER

MOUNTING SCREW : 3-M8x12



CYLINDER CONN. ① ②  
Rc 1/2



CYLINDER CONN.

DYNAGUIDE

DRAIN PORT RETURN OIL CONN.

ADJUSTABLE GAIN BOOSTER

RETURN OIL CONN.

SUPPLY OIL PRESS. CONN.

JET PIPE OIL PRESS. CONN.

WHEN INPUT SIGNAL INCREASE, OIL PRESS. COME OUT FOR ② PORT WITH JET PIPE SWING B SIDE.

SUPPLY OIL PRESS. CONN. ③  
Rc 1/2

DYNAGUIDE

DJ230 - B09.51/Y

Y: NON-ASBESTOS SEAL

OWN: T. TSUCHIYA Dev. Z 7/1 SCALE: 20 X  
 CAP. N. SAKAKAWA  
 M. SANDO Rev. 2/97 ORDER NO.  
 TSUBATO Rev. 3/97

DRG. NO. BIA410182.0-EA

**DYNARECO**

NIRECO CORPORATION

FORM NO. A30301

